


**Jabra** GN

## The Jabra Biz 1500 Engineered for the cost-conscious contact center

### The Biz 1500 is an affordable, professional corded headset for all-day conversations

#### Professional sound at an affordable price

Noise-cancelling air shock microphone reduces background noise and sharp breathing sounds. HD Voice makes conversations sound vibrant and lifelike – ideal for the crowded call center that needs to deliver a professional customer experience.

#### Tough design that won't let you down

Demanding contact centers need headsets that can survive intense use – all-day, every day. The Biz 1500 is built with durable materials and features a 270° flexible spin boom arm that can be rotated without the risk of breaking.

#### Comfortable and easy to use

Lightweight and with an ergonomically designed frame, the Biz 1500 is made to be worn all day. Comfortable foam ear cushions keep ears cool – allowing agents to stay focussed on calls. USB versions come with a control unit for simple call control.

#### Connection and wearing style options

The Biz 1500 range offers mono and stereo models, and a choice of USB and QD versions.

#### Easy mass deployment for all devices

Jabra Xpress enables easy configuration for all of your company's audio devices, and from one central point<sup>1</sup>.

<sup>1</sup> Go to [Jabra.com/xpress](http://Jabra.com/xpress)

At a glance:

#### Jabra Biz 1500 corded headsets

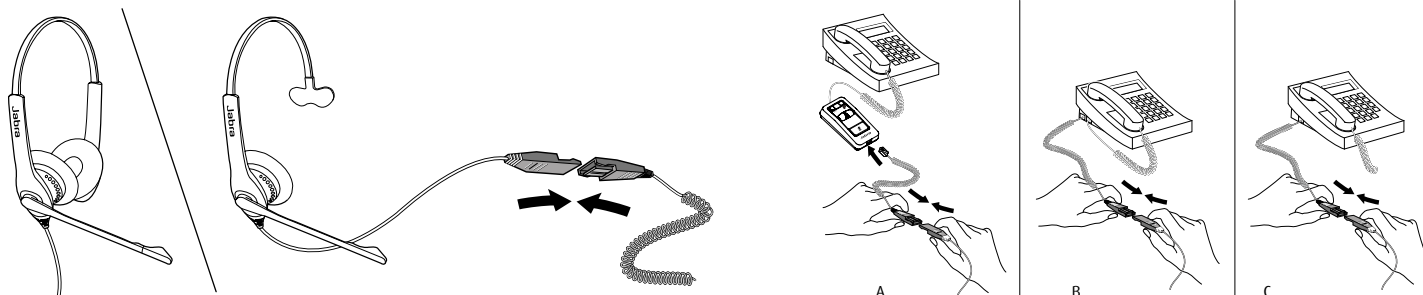
- Professional sound at an affordable price
- Tough design for all-day use
- Comfortable and easy to use
- Lightweight and with foam ear cushions
- PeakStop™ protects against spikes in sound



Works with



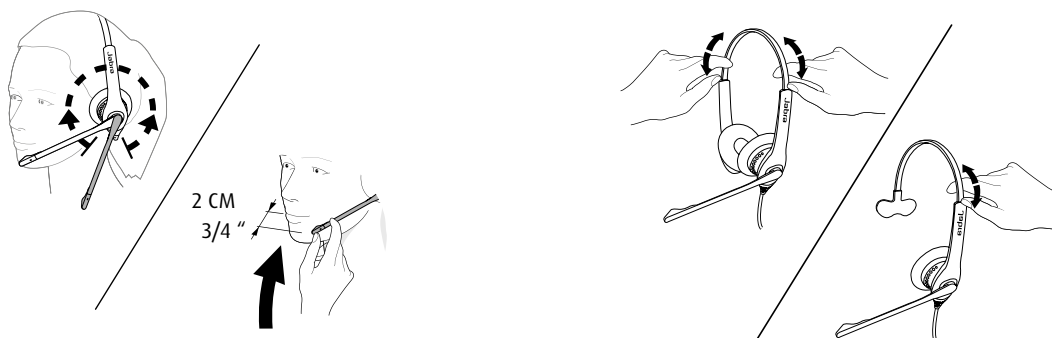
## How to connect



Duo or mono available with QD connectivity (USB available)

QD connectivity

## How to wear



Jabra Biz 1500 has a 270° boom arm so it can be easily adjusted without breaking.

Duo or mono available. Adjustable headband



Features	Jabra Biz 1500 QD Duo	Jabra Biz 1500 QD Mono	Jabra Biz 1500 USB Duo	Jabra Biz 1500 USB Mono
Connectivity* – how many devices	1	1	1	1
User sound protection (PeakStop™)	Yes	Yes	Yes	Yes
Digital Signal Processing	No	No	Yes	Yes
Noise cancelling microphone	Yes	Yes	Yes	Yes
Microphone (G-MOS, Tx, CC)	4.3	4.3	4.3	4.3
Speaker (HD-Voice/wideband - up to)	4.5	4.5	6.8	6.8
Boom arm adjustable	270°	270°	270°	270°
Boom arm flexible	Yes	Yes	Yes	Yes
USB-Controller	No	No	Yes	Yes
Cord length (cm)	95	95	230	230
Ear cushions	Foam	Foam	Foam	Foam
Wearing styles	Headband	Headband	Headband	Headband
Headset weight (incl. cord) (g)	115	88	116	92

**Compatibility** For compatibility information go to [Jabra.com](http://Jabra.com)

\* All QD headsets require a connection cable (Jabra Link 180, 230, 260, 265 or Jabra Link 280)